

Emergency Safety Intervention Parent Information

<http://saintcatherinewichita.com/office>

Catholic Diocese of Wichita

EXAMPLE LETTER

Date _____

Dear parent or guardian of _____,

We are writing to inform you that an emergency safety intervention has been used with your child due to behavior that presented a reasonable and immediate danger of physical harm to your child or others. An emergency safety intervention is the use of seclusion or physical restraint. Details of the incident regarding your child are included below.

This is the first time an emergency safety intervention has been used on your child this school year. Accordingly, we are providing you with website links and printed copies of the standards for when emergency safety intervention may be used, a flyer on your rights under emergency safety intervention law, information on your right to file a complaint with the Catholic School Office through the dispute resolution process, information on your right to request administrative review from the Kansas State Board of Education, and information to assist you in navigating these processes. If future incidents occur, we will provide you with the website link so that you may access this information electronically. We recommend keeping this packet of information in case you have future questions or concerns. Once you have had time to review the information, please call us with any remaining questions.

Local Emergency Safety Intervention Resources: <http://saintcatherinewichita.com/office>
State Emergency Safety Intervention Resources: <http://ksdetasn.org/tasn/emergency-safety-interventions-esi-resources>

Sincerely,

R. Jeremy Barr
316-719-2917

Date of Incident: _____

Time of incident: _____

Duration of incident: _____

Type of Emergency Safety Intervention Used (circle): Seclusion Physical Restraint

School Personnel Who Participated in or Supervised the Incident: _____

Table of Contents

Standards of When ESI May Be Used	Page 5-6
Local Dispute Resolution Process	Page 7
Local Dispute Resolution Guide for Parents	Page 8
State Board Administrative Review Process	Page 9-10
State Board Administrative Review Guide for Parents	Page 11
Fact Sheet about ESI	Page 12-13
Contact Information	Page 14

Standards for the use of Emergency Safety Interventions

The emergency safety interventions (ESI) law set forth standards for the use of restraint and seclusion to ensure that all Kansas students and staff have a safe learning environment. The standards found in the ESI statutes and regulations are required to be followed in all Kansas public school districts and accredited private schools.

An **ESI** is the use of seclusion or physical restraint. The use of ESIs shall **cease as soon as the immediate danger of physical harm and violent action ceases to exist.**

Before using an ESI, a school employee witnessing the student's behavior must have determined that **less restrictive alternatives** to ESI, such as positive behavior interventions support, were inappropriate or ineffective under the circumstances.

ESIs shall be used **only when a student presents a reasonable and immediate danger of physical harm to such student or others with the present ability to effect such physical harm.** Violent action that is destructive of property may necessitate the use of an ESI. ESIs may not be used for purposes of discipline, punishment, or for the convenience of a school employee.

Physical restraint means bodily force used to substantially limit a student's movement. Physical restraint is **NOT**:

- Consensual, solicited or unintentional contact and contact to provide comfort, assistance or instruction;
- physical escort;
- prescribed treatments for a student's medical or psychiatric condition by a person appropriately licensed to issue these treatments;
- protective or stabilizing devices either ordered by an appropriately licensed professional or required by law;
- any device used by a law enforcement officer in carrying out law enforcement duties;
 - seatbelts and any other safety equipment when used to secure students during transportation.

Prohibited types of restraints:

- **Prone**, or face-down, physical restraint;
- **supine**, or face-up, physical restraint;
- any physical restraint that **obstructs the airway** of a student;
- any physical restraint that **impacts a student's primary mode of communication**;
- **chemical** restraint ("chemical restraint" means the use of medication to control a student's violent physical behavior or restrict a student's freedom of movement); and
- **mechanical** restraint ("mechanical restraint" means any device or object used to limit a student's movement).

Seclusion means placement of a student in a location where:

- The student is placed in an **enclosed area** by school personnel;
- the student is **purposefully isolated** from adults and peers; and
- the student is **prevented from leaving**, or the student reasonably believes that such student will be prevented from leaving, the enclosed area.

A student may not be secluded if the student is known to have a **medical condition** that could put the student in mental or physical danger as a result of seclusion. The medical condition must be in a written statement from the student's licensed health care provider, and a copy of given to the school and placed in the student's file.

When a student is placed in seclusion, a school employee shall be able to **see and hear the student at all times**.

If a seclusion room has a locking door it must be designed to ensure that the lock automatically disengages when the school employee viewing the student walks away from the seclusion room, or in cases of emergency, such as fire or severe weather.

A seclusion room must be a **safe place**. The room must have good ventilation and lighting, and be free of any condition that could be a danger to the student. The room must also be similar to other rooms where students frequent.

Seclusion is **not time-out**, which is a behavioral intervention in which a student is temporarily removed from a learning activity without being confined.

Local Dispute Resolution Process

Taken From Diocesan Policy Book

314 Conflict Resolution

A conflict may occur as a result of an action, rule, decision, or other factor felt to be unjust or grounds for complaint. This procedure provides for the orderly and expeditious resolution of conflicts of individual parents, faculty, students, or employees associated with a Catholic school. Proceedings are to be kept as informal and confidential as may be appropriate at any level of the procedure. These procedures are to be invoked only after the parties to the dispute have met and failed to resolve the complaint. These procedures are imposed not to serve as impediments to resolution, but to serve the purposes of consistency and fairness.

Hearing

All formal complaints must be submitted to the building principal in writing. If possible, within three school days of receipt of the notice the administrator will meet with all parties to the conflict. If a resolution can be reached, it will be communicated promptly by the administrator to each party.

Appeal

Parish Schools

If the conflict is not resolved, a conference with the pastor, principal, and all parties will be held within five working days following the first conference, if possible. When a resolution has been reached, it will be communicated in writing to each party. The pastor's decision will be final.

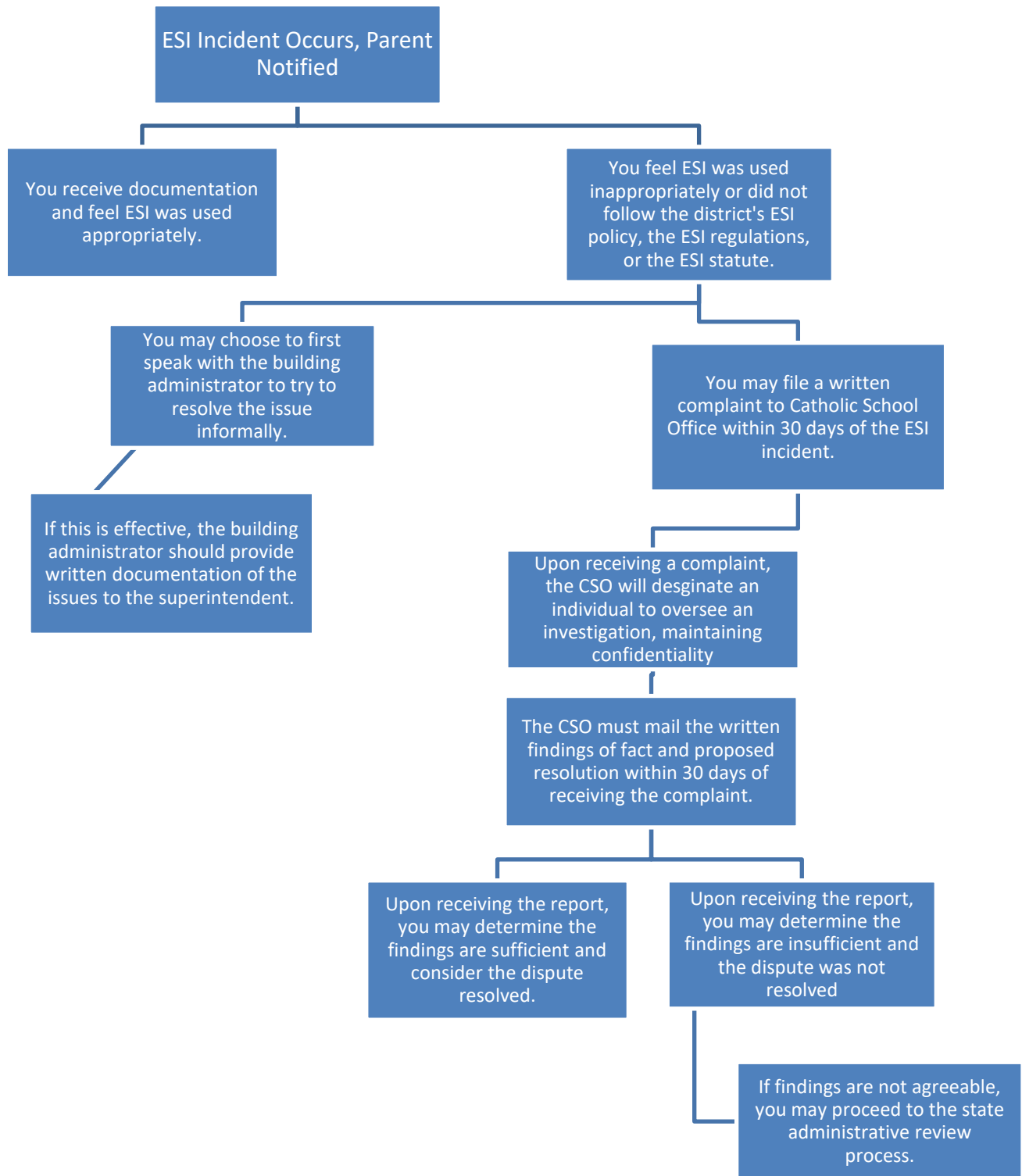
Diocesan High Schools

If the conflict is not resolved, a conference with the superintendent or the superintendent's designee, the president/principal, and all parties will be held within five working days, if possible, following the first conference. When a resolution has been reached, it will be communicated in writing to each party. The superintendent's decision will be final.

Priests

If a complaint is filed against a priest, it shall be referred to the Vicar General (or his designee) for resolution. The Vicar General's decision will be final.

Local Dispute Resolution Guide for Parents



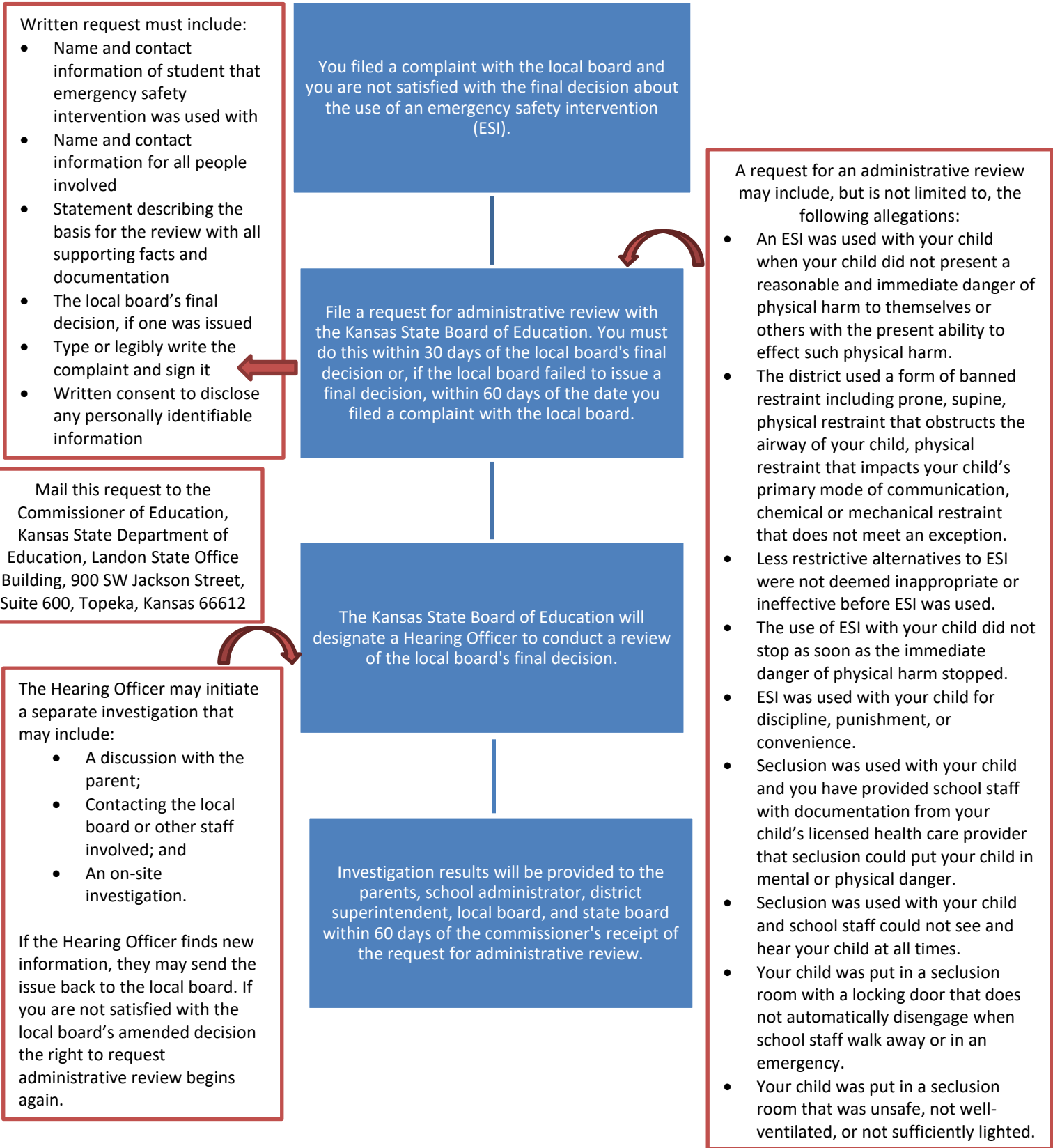
State Board Administrative Review Process

Refer to K.S.A. 2015 Supp. 72-89d04(b) and K.A.R. 91-42-5 for complete information. The following provides a summary of the regulations regarding an administrative review initiated with the Kansas State Board of Education (KSBE).

- If a parent believes an emergency safety intervention was used in violation of K.S.A. 2015 Supp. 72-89d01 through -89d09 or K.A.R. 91-42-1 through -7 and the parent filed a written complaint with their local board of education, then this parent may request an administrative review of the local board's decision from KSBE.
 - The request for administrative review must include the following information:
 - Name of the student and contact information;
 - Names and contact information for all involved parties (teachers, aides, administrators, and district staff), to the extent known;
 - A detailed statement of the reason for requesting an administrative review;
 - Any supporting facts and documentation; and
 - A copy of the complaint filed with the local board, the local board's final decision (if issued).
 - The written request for administrative review must be typed or legibly written and signed by the parent.
 - Relevant documents must be attached or, if unavailable, the documents must be referenced in the request for administrative review.
 - Written consent to disclose any personally identifiable information from the student's education records necessary to conduct an investigation
- The request for administrative review must be filed with the Commissioner of Education within 30 days of the local board issuing its final decision OR within 60 days from the date the parent filed a complaint with the local board, if the local board did not issue a final decision. You may mail this request to the Kansas State Department of Education, Landon State Office Building, 900 SW Jackson Street, Suite 600, Topeka, Kansas 66612.
- A Hearing Officer will be designated by KSBE. The Hearing Officer must send a copy of the request for administrative review to the local board.
- The Hearing Officer will consider the local board's final decision and may initiate an investigation that could include:
 - A discussion with the parent, during which additional information may be gathered;
 - Contact with the local board or other district staff to allow the local board to respond to the request with information supporting its final decision; and
 - An on-site investigation by Kansas Department of Education staff.

- If new information is discovered that was not made available to both the parent and the local board during the dispute resolution process, the Hearing Officer may send the issue back to the local board.
 - If sent back to the local board, the Hearing Officer's case will be closed and the local board has 30 days to issue a written amended final decision.
 - If the parent feels the local board's amended final decision does not adequately address the issue, the parent may file a new request for administrative review with the commissioner by following the above process for requesting administrative review. This must be done within 30 days of the local board issuing its amended final decision. If the local board does not issue an amended final decision within 30 days, then the parent has 30 days from the date the Hearing Officer sent the issue back to the local board to file a request for administrative review with the commissioner.
- Within 60 days of receiving the request for administrative review, the Hearing Officer will, in writing, inform the parents, school administrator, district superintendent, local board clerk, and the state board of the results of the review. This time frame may be extended for good cause upon approval of the commissioner.
- The results of the administrative review will contain findings of fact, conclusions of law, and any suggested corrective actions. The Review Officer's determination will include one of the following:
 - The local board appropriately resolved the complaint.
 - The local board should re-evaluate the complaint with suggested findings of fact.
 - The Hearing Officer's suggested corrective active is necessary to ensure that local board policies meet legal requirements.

State Administrative Review Guide for Parents





Emergency Safety Intervention Fact Sheet

Key Requirements from the Emergency Safety Intervention Statutes and Regulations

Physical Restraint:

Bodily force used to substantially limit a student's movement, except that consensual, solicited or unintentional contact and contact to provide comfort, assistance or instruction shall not be deemed to be physical restraint. The term physical restraint does not include a physical escort. Physical escort means the temporary touching or holding the hand, wrist, arm, shoulder, or back of a student who is acting out for the purpose of inducing the student to walk to a safe location.

The use of prone (face-down) physical restraint, supine (face-up) physical restraint, physical restraint that obstructs the airway of a student, or any physical restraint that impacts a student's primary mode of communication is **prohibited**.

Seclusion:

Placement of a student in a location where all the following conditions are met:

- (1) The student is placed in an enclosed area by school personnel;
- (2) the student is purposefully isolated from adults and peers; and
- (3) the student is prevented from leaving, or the student reasonably believes that the student will be prevented from leaving, the enclosed area.

It does not include a time-out, which is a behavioral intervention in which a student is temporarily removed from a learning activity without being confined. A student cannot be secluded if staff knows that a student has a medical condition that could put the student in mental or physical danger. When a student is placed in seclusion, a staff member must be able to see and hear the student at all times. All seclusion rooms that have a locking door must be designed to ensure that the lock automatically disengages when the staff member watching the student walks away or in cases of emergency such as fire or severe weather. If a school uses a seclusion room it must be a safe place, free of any dangerous conditions, well-ventilated, and sufficiently lighted.

When Emergency Safety Intervention May Be Used

- Emergency safety intervention shall only be used when the student presents a reasonable and immediate danger of physical harm to self or others with the present ability to effect such physical harm
- Less restrictive alternatives, such as positive behavior interventions support, must be deemed inappropriate or ineffective under the circumstances prior to emergency safety intervention being used
- The use of emergency safety intervention must stop immediately when the danger of physical harm ends
- Violent action that is destructive of property may necessitate the use of emergency safety intervention
- Emergency safety intervention must not be used for discipline, punishment, or the convenience of a school employee

Parent Notification and Required Meetings

- Parents must be notified the same day that an emergency safety intervention incident occurs
- Parents must be provided information about emergency safety intervention, their rights, and the dispute resolution process the day following an emergency safety intervention incident
- After the third emergency safety intervention incident with a student in a school year, there must be a meeting within 10 days to discuss the incident and support for the student

Contact Information

Local

District Administrator Contact for Emergency Safety Intervention Questions

Dr. Jamie Finkeldei, Associate Superintendent

316-269-3950

finkeldej@catholicdioceseofwichita.org

School Administrator Contact for Emergency Safety Intervention Questions

Jeremy Barr

316-719-2917

jbarr@saintcatherinewichita.com

<http://saintcatherinewichita.com/office>

State

General Emergency Safety Intervention Information:

<http://ksdetasn.org/tasn/emergency-safety-interventions-esi-resources>

Emergency Safety Intervention Questions:

Laura Jurgensen

Kansas State Department of Education

ljurgensen@ksde.org

785-296-5522

Parent Training and Information Center:

Families Together

<http://famielsttogetherinc.org/>

888-815-6364

Protection and Advocacy System:

Disability Rights Center of Kansas

<http://www.drckansas.org/>

877-776-1541 or 785-273-9661